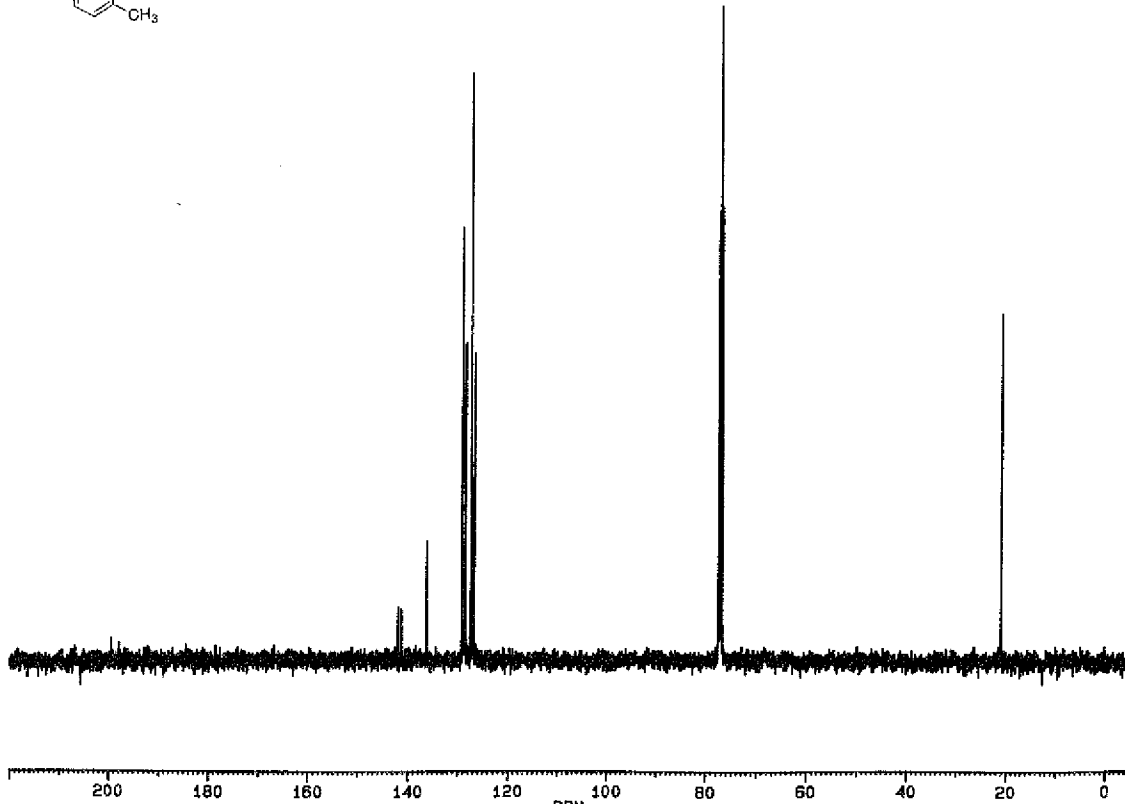
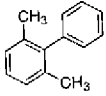


DESMH1.912  
 MIN. INTENSITY = .139 F MAXY = 23.50000 RP CONSTANT = 1.00000  
 INTENS. LEVEL = .139 NOISE = .00093 SENS. LEVEL = .00372  
 F1 = 4001.38 HZ = 10.0001 PPM F2 = -400.16 HZ = -1.0001 PPM

#	CURSOR	FREQUENCY	PPM	INTENSITY
1	5754	3042.022	7.6025	.329
2	5772	3034.650	7.5941	.438
3	5874	2984.306	7.4583	.210
4	5917	2974.992	7.4350	1.932
5	5934	2967.732	7.4168	4.249
6	5953	2960.103	7.3978	3.557
7	5986	2945.651	7.3617	.276
8	5991	2944.442	7.3584	.330
9	6003	2939.607	7.3465	1.846
10	6020	2932.339	7.3284	2.423
11	6038	2924.890	7.3098	.963
12	6107	2896.486	7.2368	1.233
13	6164	2873.126	7.1804	.827
14	6179	2868.785	7.1651	1.402
15	6190	2862.349	7.1535	3.926
16	6193	2861.059	7.1503	4.757
17	6199	2858.513	7.1439	4.341
18	6210	2854.125	7.1329	4.286
19	6229	2846.427	7.1137	6.451
20	6247	2839.010	7.0951	2.560
21	6268	2830.218	7.0732	.334
22	6275	2827.384	7.0661	.316
23	6341	2800.155	6.9980	.170
24	6357	2793.570	6.9816	.173
25	10792	964.270	2.4099	.622
26	10823	951.752	2.3768	.259
27	10827	925.340	2.3126	1.349
28	11013	873.503	2.1830	.159
29	11165	810.847	2.0264	36.807
30	11220	746.897	1.8665	.198
31	11656	608.033	1.5196	.636
32	11746	571.920	1.4293	.218
33	11917	500.691	1.2513	.144

1.PX 1.



DESHMFX.001  
 MIN. INTENSITY = 1.147 MAXY = 0.0 PP CONSTANT = 1.00000  
 INTENS. LEVEL = 1.147 NOISE = .12829 SENS. LEVEL = .51317  
 F1 = 22136.31 HZ = 220.0125 PPM F2 = -501.63 HZ = -4.9857 PPM

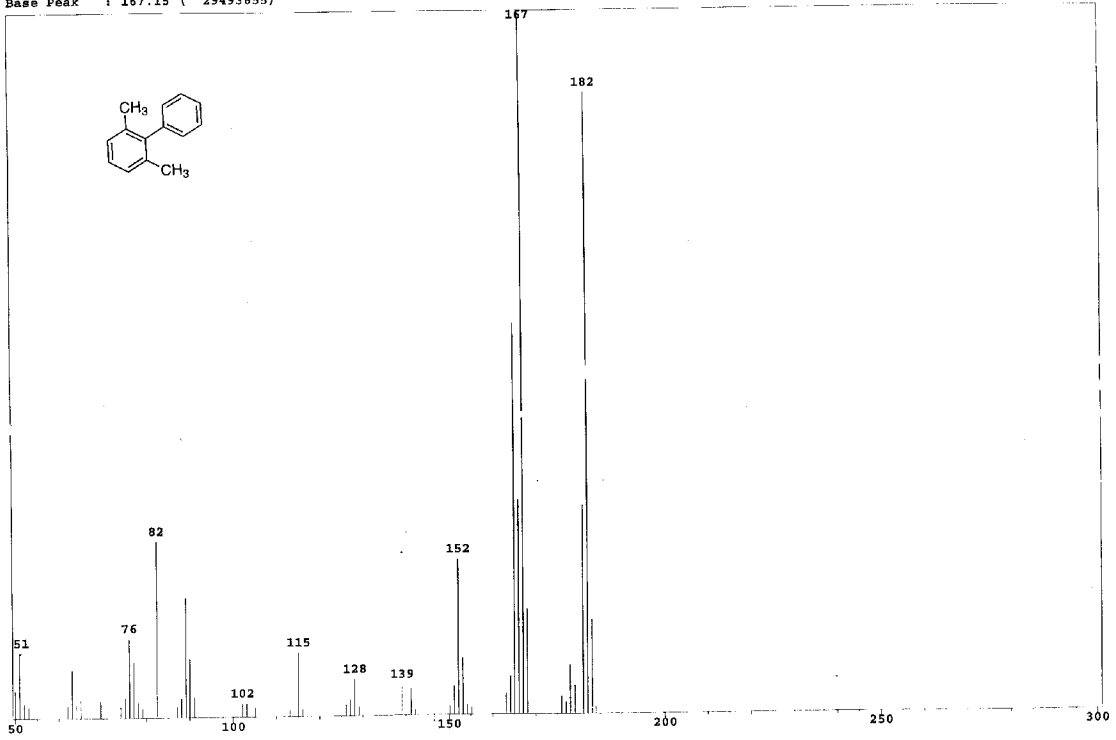
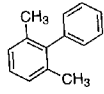
#	CURSOR	FREQUENCY	PPM	INTENSITY
1	2739	14274.986	141.8789	1.196
2	2764	14197.983	141.1136	1.185
3	2991	13688.837	136.0532	2.687
4	3163	12961.139	129.0194	9.699
5	3184	12917.882	128.3907	7.438
6	3221	12803.972	127.2585	13.161
7	3230	12777.602	126.9964	4.249
8	3243	12736.843	126.5913	6.879
9	4868	7778.957	77.3150	10.650
10	4878	7747.258	76.9999	14.859
11	4888	7715.553	76.6848	10.841
12	6731	2092.465	20.7970	7.771

1.PX 1.2 2.

2U:NMRNET

Bad command. Type help for commands.  
 NMR2PC <bin>

Scan # : 796  
Mass Peak # : 54 Ret. Time : 9.625  
Base Peak : 167.15 ( 29493655)



Data : DESH912.D01  
Scan # : 796  
Mass Peak # : 54 Ret. Time : 9.625

Mass	R.Int	Mass	R.Int
50.05	3.97	126.15	1.58
51.05	9.36	127.15	2.32
52.05	2.10	128.15	5.20
53.05	1.66	129.15	1.27
62.05	1.81	139.10	4.40
63.05	6.88	141.20	3.87
64.05	2.15	142.15	1.03
65.05	2.54	150.15	1.31
69.50	2.45	151.15	4.09
74.05	1.64	152.15	22.04
75.15	2.87	153.15	8.05
76.10	11.27	154.15	1.38
77.10	7.94	155.15	1.04
78.10	2.18	163.15	2.95
79.10	1.28	164.20	5.40
82.50	24.93	165.15	55.48
87.10	1.56	166.15	30.32
88.10	2.73	167.15	* 100.00
89.15	17.03	168.15	15.01
90.05	8.37	176.10	2.52
91.10	2.89	177.10	1.66
102.10	1.95	178.10	6.96
103.15	1.87	179.15	4.03
105.15	1.38	181.10	29.47
113.05	1.03	182.15	88.06
115.10	9.06	183.15	13.36
116.10	1.12	184.10	1.07



